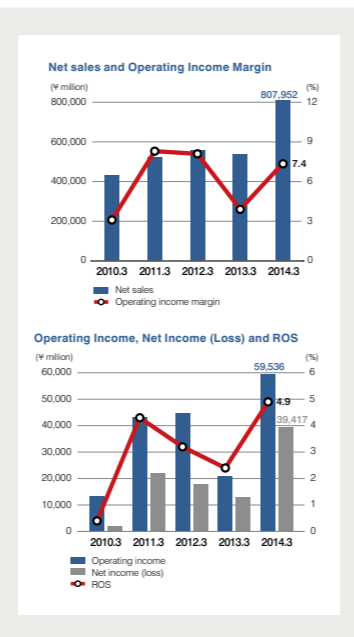


Financial Highlights 08

Hitachi Metals, Ltd. and Consolidated Subsidiaries
(As of and for the years ended March 31, 2014, 2013, 2012, 2011, and 2010)

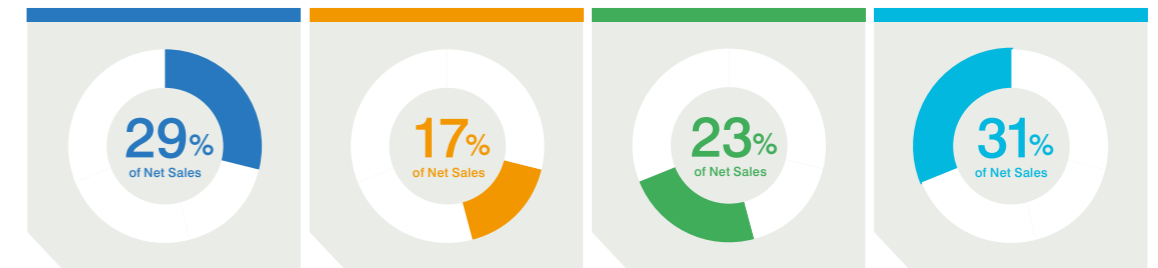
Our Business 10

The Hitachi Metals Group is an integral supplier of highly functional component materials that draw on its competitive core technologies. With products that are recognized as leading global brands, the Group operates in the automobile-, electronics-, and infrastructure-related markets, guided by the overarching theme of "global environmental protection."



Business Performance 28

At a Glance 28 Net Sales by Business Segment [Year ended March 31, 2014]



Products by Segment 30

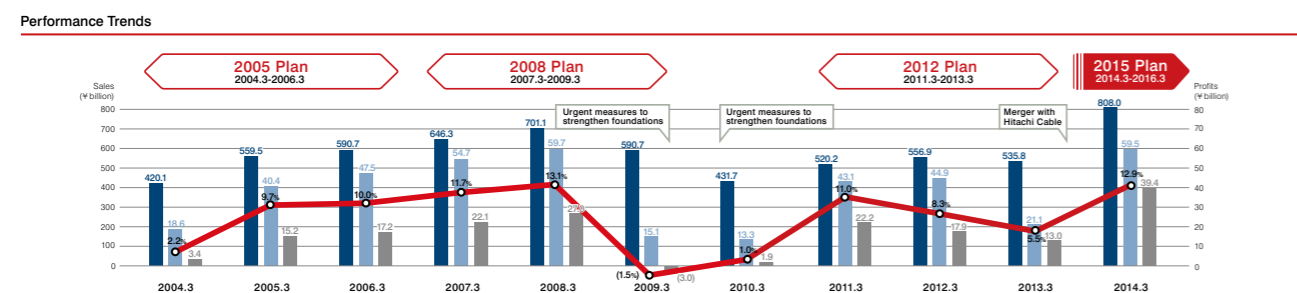
A Message from the CEO 12

To Our Shareholders and Investors

Q1	Please sum up FY2013, ended March 31, 2014, and describe the company's positioning for FY2014.	14
Q2	What is the status of the Hitachi Cable merger?	15
Q3	As you seek sustained growth, what are the main management issues for Hitachi Metals?	16
Q4	What is the status of progress on the Medium-term Management Plan, and what is your priority theme?	18
Q5	Please tell us about your policies related to shareholder returns.	19

FY2015 Medium-Term Management Plan 20

(ending March 31, 2016)



Review of Operations by Segment 32

High-Grade Metal Products and Materials 32	High-Grade Functional Components and Equipment 44
Financial Results 32 Business Overview 33 Topics 34 Product Lineup 36	Financial Results 44 Business Overview 45 Topics 46 Product Lineup 48
Magnetic Materials and Applications 38	Wires, Cables, and Related Products 52
Financial Results 38 Business Overview 39 Topics 40 Product Lineup 42	Financial Results 52 Business Overview 53 Topics 54 Product Lineup 56

Financial Management 58

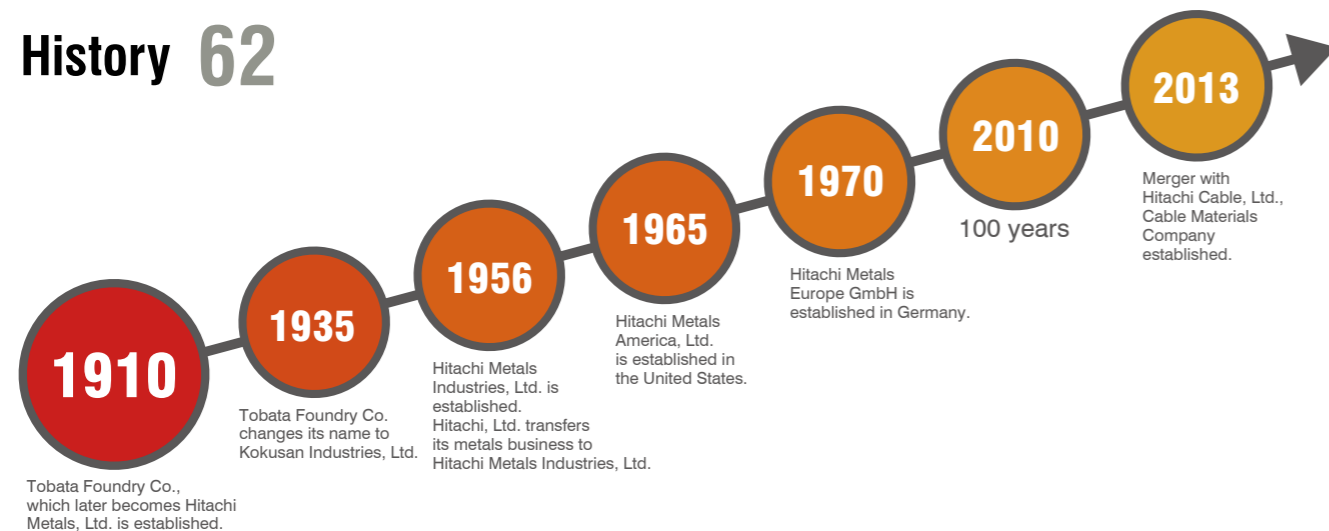
Research and Development 60

Corporate Profile 61

The Defining Essence of Hitachi Metals

Since its inception as a corporate entity, Hitachi Metals has firmly subscribed to the corporate philosophy of contributing to society by becoming the best possible company.

History 62



Products by Market 64



Automotive-Related Products 64

Contributing to the Manufacture of Safe and Eco-Friendly Automobiles



Electronics-Related Products 66

Advancing the Progress of Electronic Products in Size and Function



Infrastructure-Related Products 68

Fortifying Industries and Social Infrastructure with Top-Brand Products

Business Units 70

- **High-Grade Metal Products and Materials 70**
Creating an uninterrupted stream of high-performance materials by combining innovative ideas with core technologies developed through proven tradition
- **Magnetic Materials and Applications 71**
We supply unique products based on advanced new material development and original component design technology
- **High-Grade Functional Components and Equipment 72**
With unparalleled casting technologies nurtured from age-old tradition, Hitachi Metals supplies highly functional high-grade casting components and equipment
- **Wires, Cables, and Related Products 73**
We continue to pursue the technology needed to transmit energy and information

Global Expansion 74

Meeting Global Customer Needs on a Timely Basis

The Hitachi Metals Group is committed to global expansion and the creation of new products to generate sustainable growth



Management 76

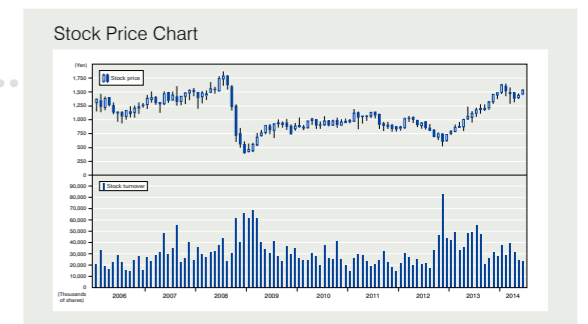
Corporate Governance and Compliance 78

Corporate Social Responsibility 87

Stock Information 91

Corporate Data / Stock Price 92

Communication Symbol 93



Disclaimer

This document contains forward-looking statements, such as results forecasts, management plans and projections that are not historical facts. All such forward-looking statements are based on assumptions and projections that were both current and rational for the purpose of making projections at the time this document was prepared. Changes to the underlying assumptions or circumstances could cause actual results to differ substantially.

Unless otherwise noted, the information included in this document was compiled at the time this annual report was prepared. With the passage of time, the information may become outdated or inaccurate.

Hitachi Metals assumes no obligation to update the information in this document in order to reflect circumstances that may occur after the date of the document's creation.

On July 1, 2013, the Company merged with Hitachi Cable, Ltd. and established a new company called the "Cable Materials Company."

The operating results of the Group include those of the new company in the "Wires, Cables, and Related Products" segment starting from the second quarter ended September 30, 2013.